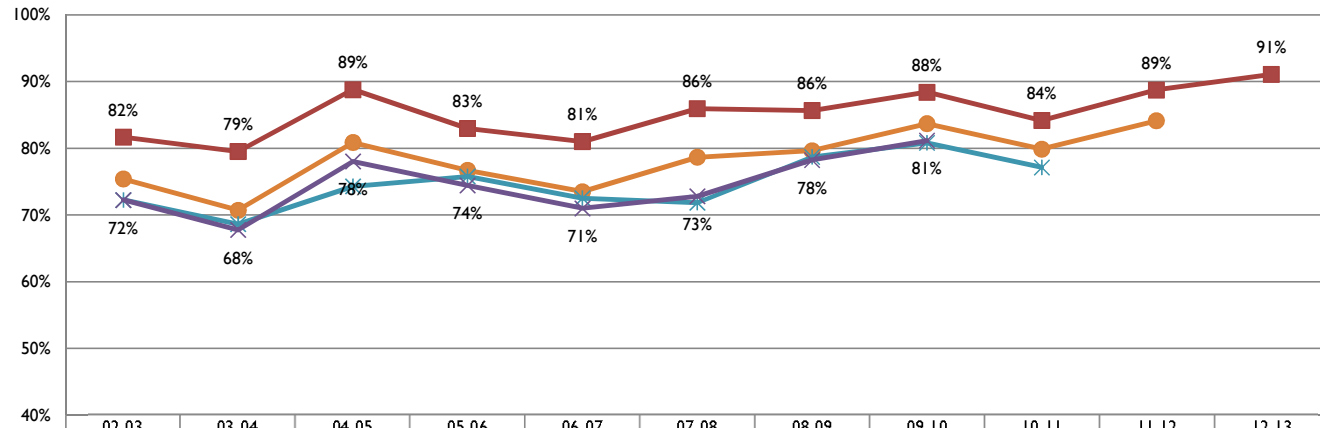


# California Lutheran University

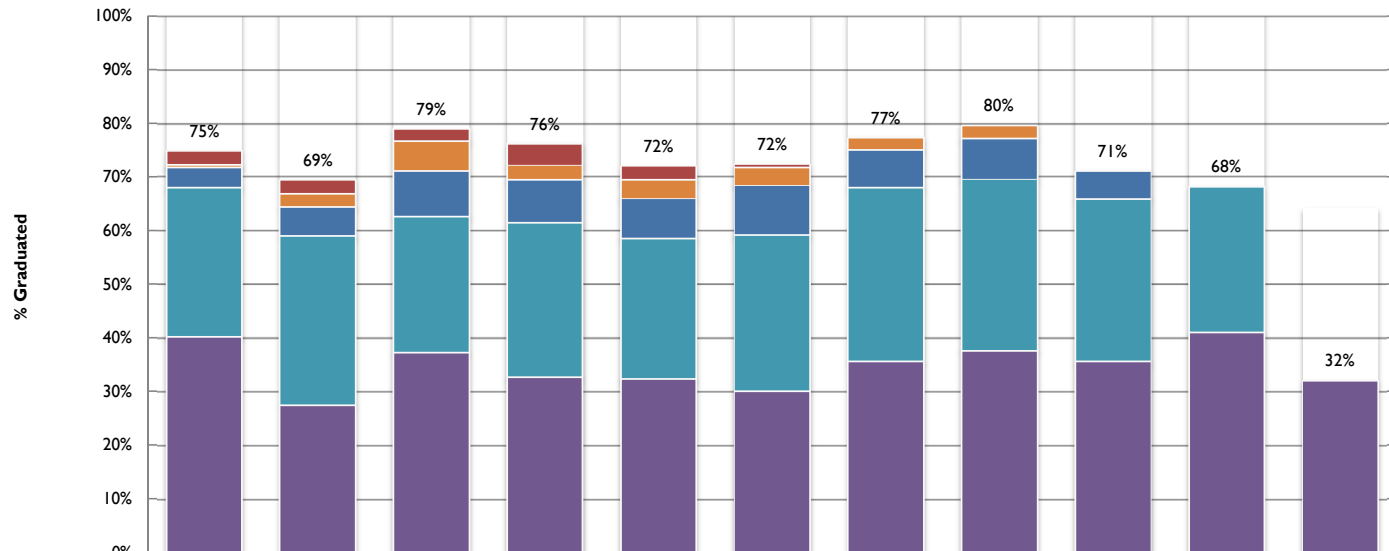
## Traditional Undergraduate Transfer Retention and Graduation Trends

### Retention Trends



	02-03	03-04	04-05	05-06	06-07	07-08	08-09	09-10	10-11	11-12	12-13
All New Traditional Transfers	191	239	214	223	200	206	216	276	328	302	336
Retained 2nd yr or graduated	82%	79%	89%	83%	81%	86%	86%	88%	84%	89%	91%
Retained 3rd yr or graduated	75%	71%	81%	77%	74%	79%	80%	84%	80%	84%	
Retained 4th yr or graduated	72%	69%	74%	76%	73%	72%	79%	81%	77%		
Retained 5th yr or graduated	72%	68%	78%	74%	71%	73%	78%	81%			
Avg. Time to Degree	2.18	2.39	2.41	2.39	2.44	2.33	2.23	2.18	2.06	1.96	1.60

### Graduation Trends



	02-03	03-04	04-05	05-06	06-07	07-08	08-09	09-10	10-11	11-12	12-13
% Graduated as of May 2014	75%	69%	79%	76%	72%	72%	77%	80%	71%	68%	32%
% Graduated by 6th yr	3%	3%	2%	4%	3%	0%	0%				
% Graduated by 5th yr	1%	3%	6%	3%	3%	3%	2%	3%			
% Graduated by 4th yr	4%	5%	8%	8%	8%	9%	7%	8%	5%		
% Graduated by 3rd yr	28%	31%	25%	29%	26%	29%	32%	32%	30%	27%	
% Graduated by 2nd yr	40%	28%	37%	33%	33%	30%	36%	38%	36%	41%	32%