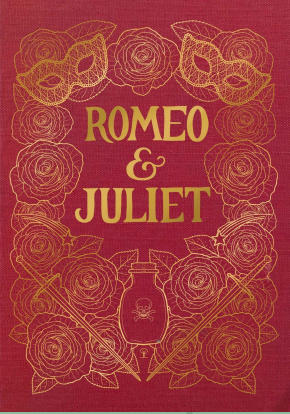
The background of the slide is a photograph of a park with lush green trees. In the foreground, several hands are raised, reaching towards the top of the frame. A semi-transparent teal rectangle is overlaid on the upper portion of the image, containing the title and author's name.

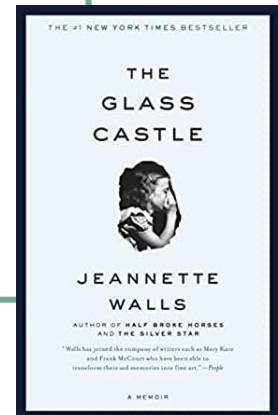
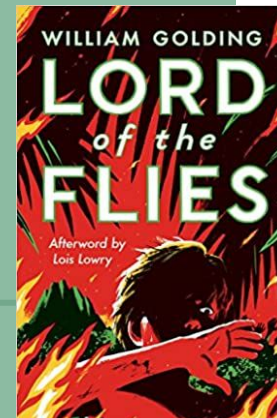
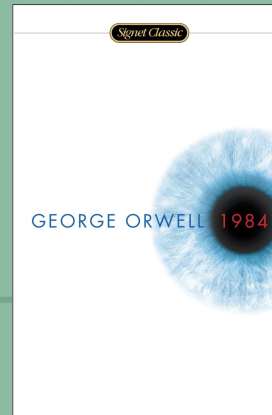
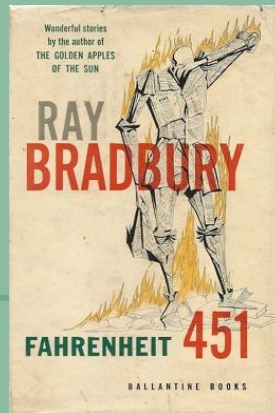
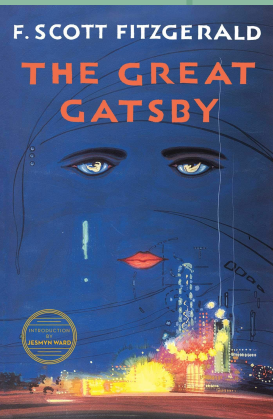
# Interweaving Contemporary Literature into the High School English Curriculum

Niki Roberts



Examples of literature widely used  
in high school curriculum

Considered to be, and debatably are,  
“timeless”





*"Based on rigorous content and application of knowledge through higher-order thinking skills"*



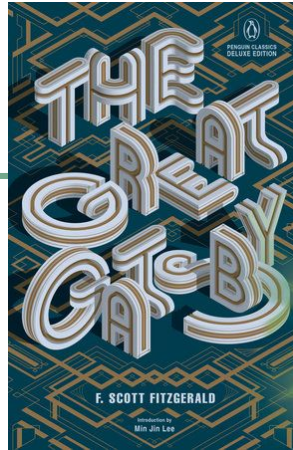
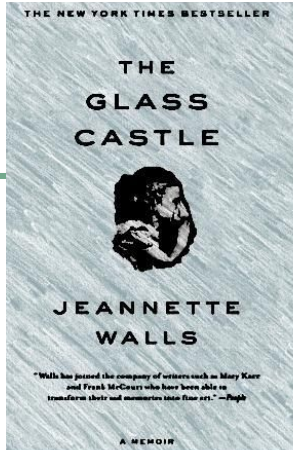
## Common Core Curriculum



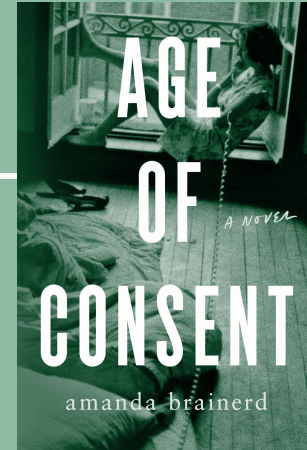
*"to prepare all students for success in our global economy and society"*



# To be Analyzed



Currently taught in high school  
curriculum  
Highly-acclaimed literature  
and classic literature



Suggested Alternative  
Released in July of 2020,  
making it both modern and  
not yet well known

40% of the communicative writing purpose should be for high school students to ***explain***



California Department of Education  
on Common Core Curriculum

*"focus on understanding words and phrases, their relationships, and their nuances and on acquiring new vocabulary"*

### *Age of Consent*

- ★ Literary Devices
- ★ Complex Diction
- ★ Unique Stylistic Choices

# The Purpose a Novel Should Serve in Curriculum

Beyond Simply Meeting Common Core Standards 



## Thematic Value

Themes should offer valuable life lessons and takeaways for students



## Relatability

Students should relate to characters and their experiences



## Interesting Stylistic Choices

The author should present a unique writing style that prompts analysis



## Usage of Literary Devices

Examples of grade appropriate literary devices should be present in the text

# Bridging the Familiar to the Unfamiliar



# *Age Of Consent's Overlapping Themes*

## *The Great Gatsby*

Social Class

Wealth

Privilege

## *The Glass Castle*

Poverty

Irresponsible parenting

Defying parental authority

Discouraging education

Independence at a young age

Embarrassment of family



# *Age of Consent* - Connecting to Students

Similar to *The Glass Castle*,  
*Age of Consent* Displays...

Relatability Common EXPERIENCES  
Underprivileged Childhood Poverty  
Dysfunctional PARENTS Skewed Judgements  
DIVISION Social Class Exclusion  
Discouragement Embarrassment  
INDEPENDENCE



# Relatability

- Self esteem
- Conflicts with parents/adults
- Bullying
- Depression
- Temptation
- Substance abuse



# In Conclusion



Thank You

